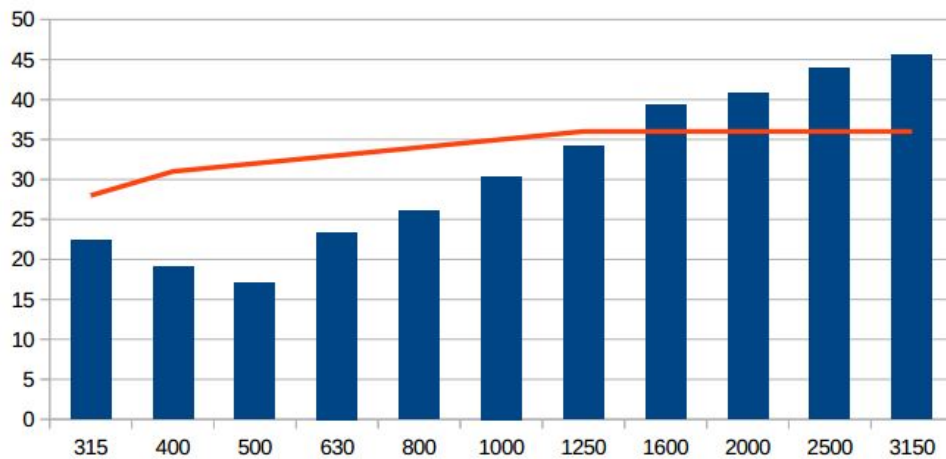



Report on measurements of engineering properties
acoustic meeting booths.

HUSH MEET HUS-BX-008

The spectrum of acoustic insulation of the cabin in the bent bands
315 Hz - 3150 Hz to determine the parameter R_w .



 The spectrum of acoustic insulation of the cabin in third octave bands.

 Reference curve.

The R_w parameter (within the 315 Hz-3150 Hz range) is - **32 dB**.