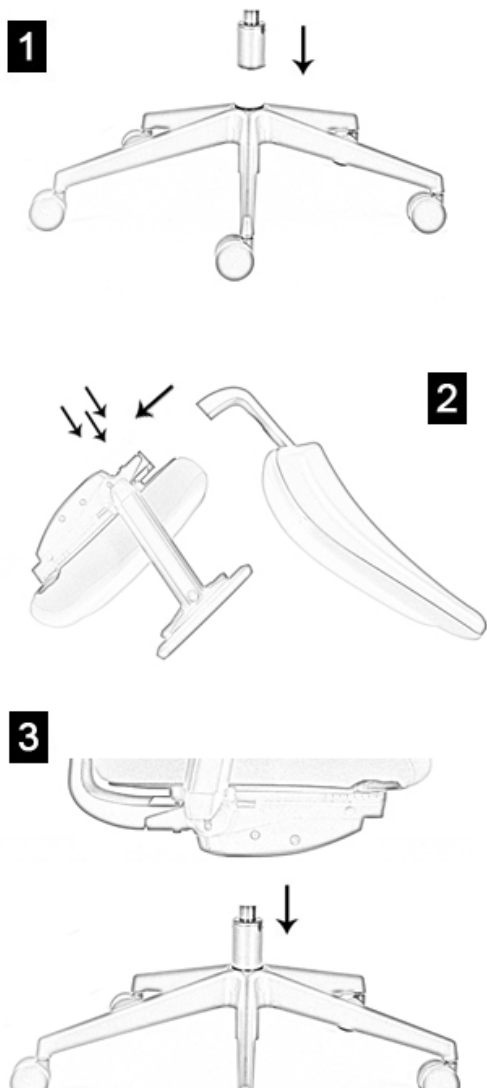


How to assemble your ECHO/1/4D



Key Information



2 Person Assembly Recommended.



Three Bolt Assembly.



1 x Allen Key (supplied) required for assembly.



This product can be assembled within 10 minutes.



This product is rated as EASY to assemble.



Check Chair Structure Every 3 Months for Max Stability.



Please note that this product will be heavy when assembled. Please ensure that if you need to lift or carry this product that you do not do this by yourself.

1 Locate the Gas Lift

Remove the 5 star base from the box and place it down on the floor. Remove the gas lift from the box and firmly push it into the hole located in the centre of the 5 star base. Please ensure that the gas lift is located securely before continuing to step 2.

2 Connect back to seat

Remove the seat assembly from the box and rest upside down on a hard surface. Using the bolts and allen key provided, secure the backrest to seat assembly by bolting through the 3 locating holes in underseat mechanism into threaded holes in metal black bar.

3 Connect chair assembly to base

Turn the completed chair top section back over and carefully locate the top of the gas lift into the circular hole in the centre of the under-seat mechanism. Your product is now assembled. Please ensure that all bolts are tight before using your product.