



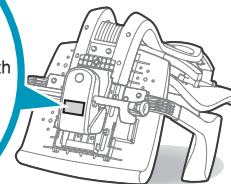
Contents

- 02 Contents
- 03 Safety Instructions
- 05 How to Assemble(D2-100/D2-150)
- 07 How to Adjust
- 12 Guide tips for backrest width / height control(Male / Female)
- 14 Trouble Shooting Guide
- 17 LIMITED WARRANTY

TIP!

For warranty claim, you shall refer to Barcode Number underneath the mechanism body.

RL 2008110000200003







Safety Instructions

- This product is a one-person chair that can be used indoors (in the office and home).
- It should not be used outdoors.
- Tighten the bolts and handle bolts of the product once every month.
- When cleaning the product, use a vacuum cleaner or wipe it with soft fabric

This is important information for the user's safety and for prevention of property damage. Please read carefully to use the product correctly.

 **Warning** If directions are not followed, it can cause death or serious injury.

 **Caution** If directions are not followed there could be personal injury or property damage.

 **Warning**

Use the product for its purpose

- Going to sleep on the product or using it to exercise can cause serious injury including death when the product falls over

Do not lean or stand up on the product

- There could be serious injury when the product falls over or rotates.

Do not lift your legs on a high surface when sitting on the product

- In the case that the product slips/falls, there's possible danger of serious injury and even death

Do not lean too far on the product

- It poses a risk of injury if the product falls

Do not use excessive force on the armrest.

- There is a risk of injury

Do not crawl under the product

- There is a risk of damage if the product falls

When using the product, sit correctly maintaining normal position

- When leaning on the backrest, seat pan, or the armrest, there is risk of injury

When someone is sitting down, do not spin or push

- There is a risk of damage

Do not put your hand in the product's assembling and operating areas.

- Your hand can get caught causing damage

Make sure infants, children, and pets do not bite or suck on the product.

- There is a risk of suffocation due to small, loose parts

Teach the child how to use the product properly and check up on them





- There is a risk of injury

No more than two people should sit on the seat pan

- It may cause damage to the product and serious injury

Be careful not to pinch your toes on the caster

- There could be damage to the toes caught



Caution

Do not use a sharp tool such as a knife when assembling the product

- There is a risk of personal injury and product damage

Do not use fire on the product or place it near heat such as direct sunlight

- There is a risk of fire igniting

Do not throw or push the product with force

- It may hurt others and cause damage to product

Assemble the product following instructions on the manual

- If the product is broken by not following the instruction manual, the product cannot be fixed free of charge under the warranty

Use gloves when assembling

- Handling with bare hands may risk injury

Do not use excessive force when assembling

04

- The product itself and/or several connecting handle bolts may be damaged or broken

Do not place or store the product on a slope

- When the product falls, the product and the floor may be damaged due to impact

Do not use the product where it is wet or polluted

- If the product slips, it could cause injury or contaminate the product

Do not place the product near a humidifier

- When using a humidifier, the calcareous components dissolved in the water may cause dust matter to accumulate on the product.

Use a floor mat when using the product on surfaces that can be easily damaged

- The floor may become contaminated or damaged

Constantly remove the dirt complied on the caster

- If the dirt is accumulated over time, it may become the source of damage

When cleaning a stained fabric, do not try to disassemble the product or wash it out with water

- It may alter the shape and cause the product to malfunction in use
- If the fabric is partly contaminated, rub with mild detergent and use after it completely dries.

Do not use the foot rest to get on the chair.







- It may cause damage and injury if the product falls over.






How to Assemble^(D2-100/D2-150)

Parts Description

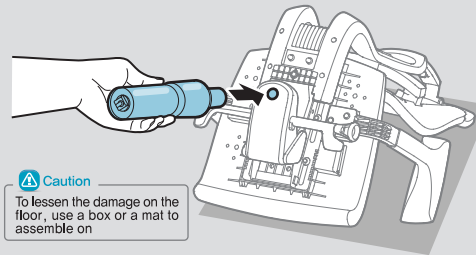
		
Seat Body x 1	Base with Castors x 1	Headrest x 1 (D2-100)
		
Allen Wrench x 1 Bolt x 2 (D2-100)	Cylinder x 1	User Manual x 1

- * The above illustrations may be different from actual parts.
- * Headrest, allen wrench and bolts are not provided with D2-100.

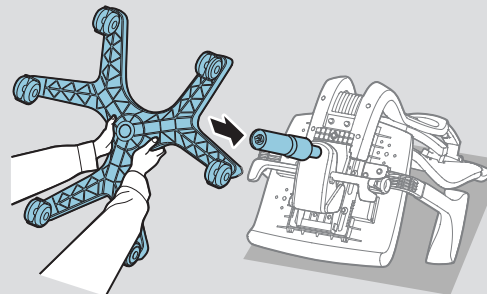
Dimension & Material

	Material
	Body Frame: Steel, Aluminum, Plastic and etc. Cushion : PU foam Upholstery : Polyester and/or Polyester-based elastomer

1 Insert cylinder into central hole under seat.



2 Set the chair upright after inserting the center groove of the base into the cylinder.



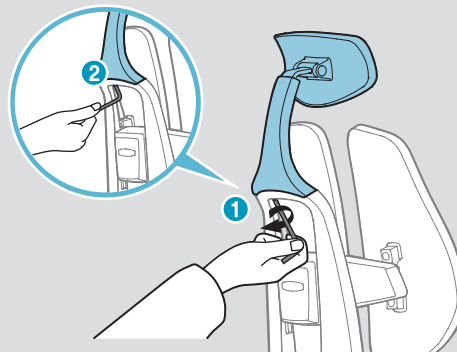


- 3 Connect the headrest to the backrest (D2-100)



06

- 4 Insert bolts into two holes on the bottom of headrest and use the longer part of allen wrench to tighten (1). Using the shorter part of the wrench, tighten the bolts to make sure they don't come loose (2). (D2-100)



- 5 The assembly is finished.

Caution

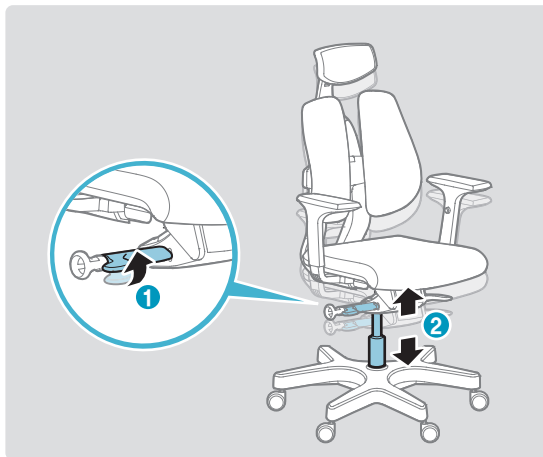
Be careful not to scratch the product when turning allen wrench on the bottom of headrest.





How to Adjust

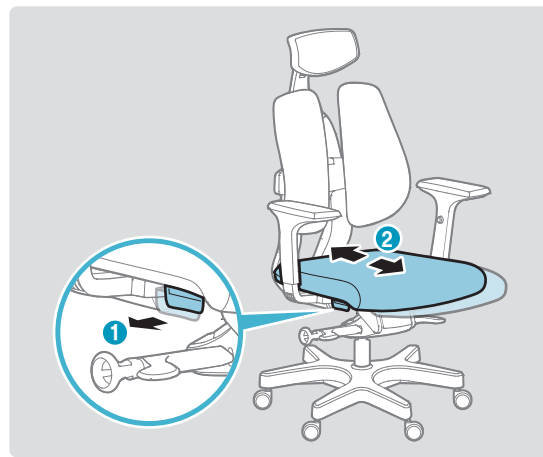
Seat Height



■ Lever on right side of chair

- To raise: Lift lever up(1) while removing your weight from chair(2).
- To lower: Lift lever up(1) while seated(2).

Seat Depth



■ Slide lever on right side of chair

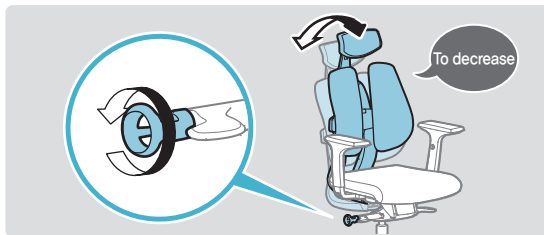
- To move forward: While pulling slide lever(1), pull seatpan(2).
- To move backward: While pulling slide lever(1), push seatpan(2).

How to Adjust | DUOREST2.0 07





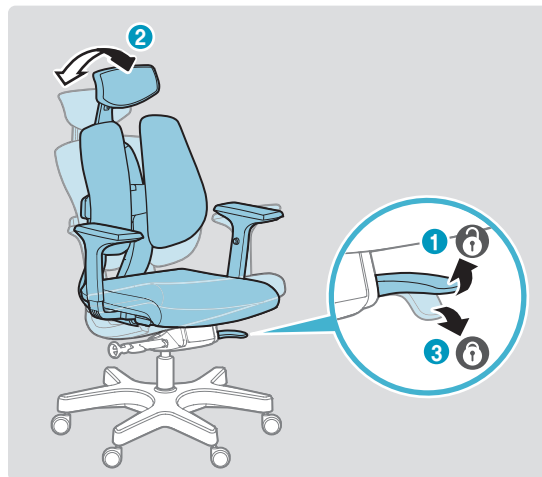
Tilt Tension



■ Control knob on right side of chair

- To increase tension: Turn knob clockwise.
- To decrease tension: Turn knob counter-clockwise.

Tilt Lock



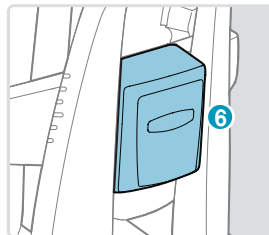
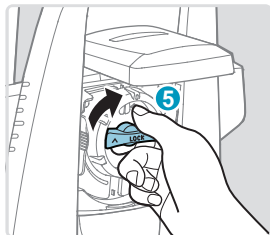
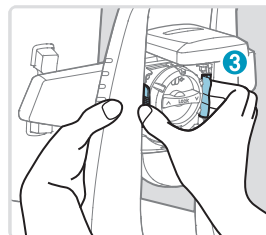
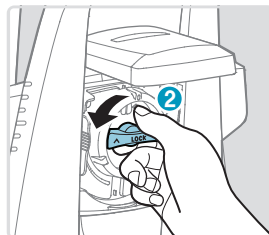
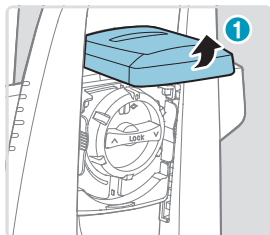
■ Lever on left side of chair

- To lock: Lift the lever while sitting (1) and recline as far as you like (1~3 stages) (2). Push the lever down until you hear a click (3).
- To unlock: Lift the lever while leaning back in the chair. Then, the lock will be released and the chair will return to the original position.

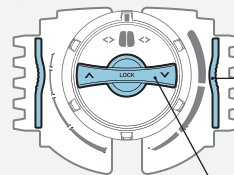




Backrest Height



<Part Name>



Backrest Height Control Button

Locking Lever

- Open the control box cover on the rear of the backrest(1).
- Loosen the locking lever by turning it to the left(2).
- Push both sides of the backrest height control buttons, while holding the backrest frame by left hand(3). Then, raise or lower the backrest to the desired position(4).

- Tighten the locking lever by turning it to the right(5).
- Close the control box(6).



Caution

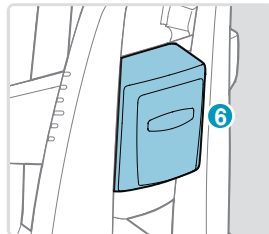
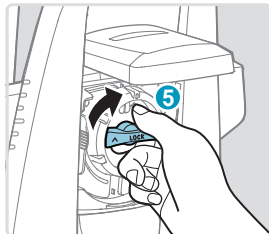
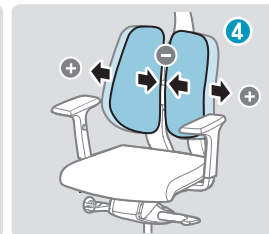
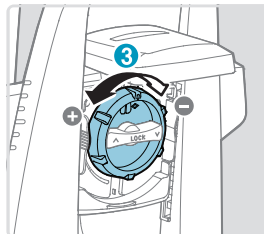
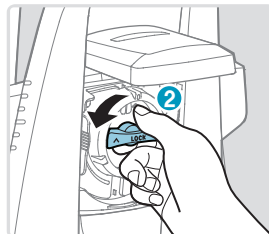
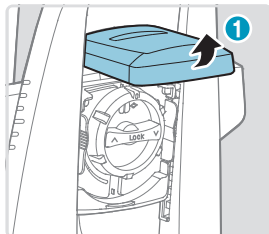
You are recommended to tighten the locking lever when it is loosened.

How to Adjust | DUOREST2.0 09

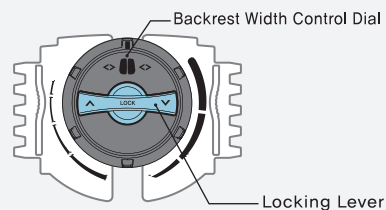




Backrest Width



<Part Name>



- Open the control box cover on the rear of the backrest(1).
- Loosen the locking lever by turning it to the left(2)
- Turning the backrest width control dial(3) counterclockwise narrows the backrest and turning it clockwise widens the backrest.
- Place the width at the desired position(4).
- Tighten the locking lever by turning it to the right(5).
- Close the control box(6).



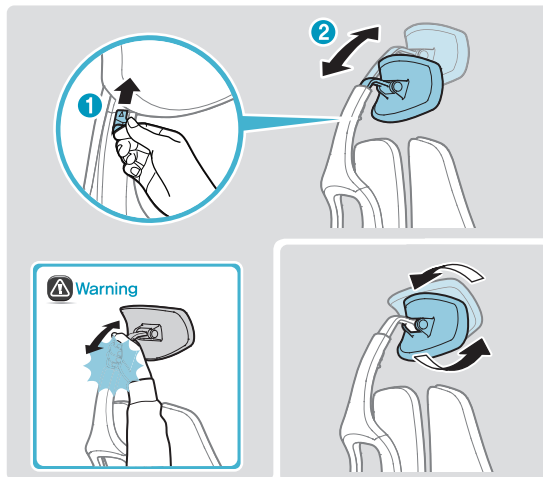
Caution

You are recommended to tighten locking lever when it is loosened.






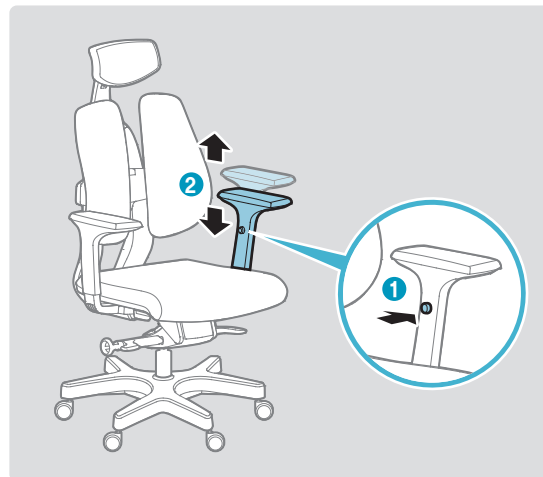
Headrest Angle/Height



- Push up the button in front of headrest support(1) and adjust to the desired height(2).
- The curved structure brings the headrest forward as the height increases and draws it back as the height decreases.
- Adjust the headrest to desired angle.

 **Warning** Be careful not to get your fingers caught when adjusting the headrest frame.

Armrest Height/Width













- Push the button(1) inside the armrest support to move the armrest to the desired height(2).
- The width becomes wider as the height increases and narrower as the height decreases.





Guide tips for backrest width / height control (Male / Female)

1. Male

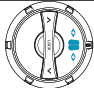

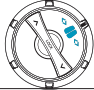







Height	Recommended adjustment (Male)			
	Gradation indicator for backrest width control		Gradation indicator for backrest height control	
up to 160 cm (up to 63 inches)	Direction to 2 o'clock		2nd stage	 2 nd stage
161~168 cm (63.1~66.1 inches)	Direction to 1 o'clock		2nd stage	 2 nd stage
169~176 cm (66.2~69.3 inches)	Direction to 12 o'clock		3rd stage	 3 rd stage
177~184 cm (69.4~72.4 inches)	Direction to 10 o'clock		4th stage	 4 th stage
over 185 cm (over 72.5 inches)	Direction to 8 o'clock		5th stage	 5 th stage

- * According to the gradation indicator for backrest width control, backrest width narrow or widens.
- * According to the gradation indicator for backrest height control, you can set the proper height fit for your body size.
- * This guide is only for usual reference because the shape of individual users body varies.





2.Female

Height	Recommended adjustment (Female)			
	Gradation indicator for backrest width control		Gradation indicator for backrest height control	
up to 150 cm (up to 59 inches)	Direction to 3 o'clock		1st stage	 1 st stage
150~154 cm (60~60.6 inches)	Direction to 2 o'clock		2nd stage	 2 nd stage
155~160 cm (60.7~62.9 inches)	Direction to 1 o'clock		2nd stage	 2 nd stage
161~169 cm (63~66.5 inches)	Direction to 12 o'clock		3rd stage	 3 rd stage
over 170 cm (over 66.6 inches)	Direction to 11 o'clock		4th stage	 4 th stage

- * According to the gradation indicator for backrest width control, backrest width narrow or widens.
- * According to the gradation indicator for backrest height control, you can set the proper height fit for your body size.
- * This guide is only for usual reference because the shape of individual users body varies.





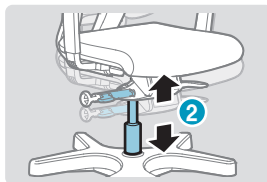
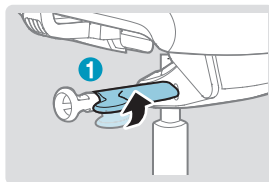
Trouble Shooting Guide

If chair malfunctions, you may be able to solve such problem with the following suggestions.

For more help, you are advised to contact the local store where you purchased the chair.

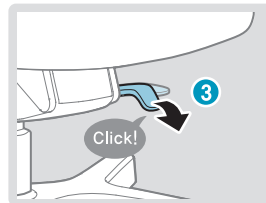
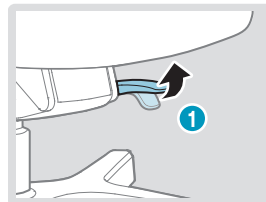
Seat height adjustment won't work

- You may not have lifted the lever up all the way.
- To increase seat height, try lifting lever up all the way(1) while removing your weight from chair(2).
- To decrease seat height, lift lever up all the way(1) while seated(2).



Tilt locking won't work.

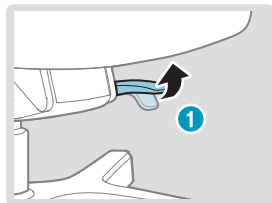
- You may not have pushed down the lever until you hear a click.
- After lifting lever up fully(1), push backrest to desired position(2) and finally push down the lever until you hear a click(3).
- Tilt lock works when the lever goes fully down.





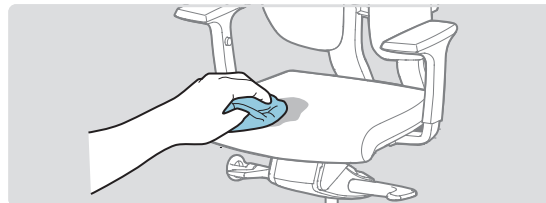
Backrest/seat pan does not return to its original position

- You may not have released tilt locking mode properly.
- While pushing up the lever on left side of chair (1), press your back against the backrest and release it (2).
- Backrest/seat pan return to its original position when tilt locking mode is properly released.



Contaminated fabric needs cleaning.

- Genuine leather or PU leather: Apply a mild, nonabrasive soap solution with a clean, wet sponge. Rinse well and let it air dry.
- General fabric: clean dirty surface with a soft cloth soaked in mild detergent and warm water. Rinse thoroughly and dry with a soft cloth.



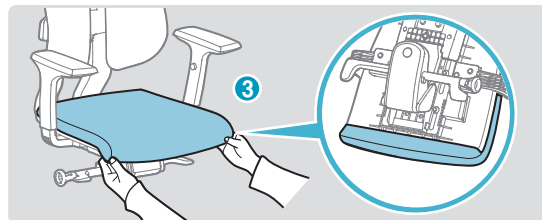
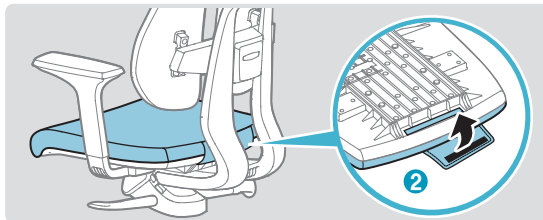
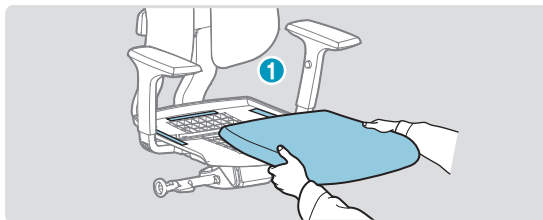
Caution Do not wash or disassemble contaminated seat or backrest for cleaning stains or spots. It may result in permanent damage to the material.





Replacing seat upholstery

- After taking off seat pan, cover seat cushion with new upholstery and attach it to Velcro straps on both sides of seat plate(1). And then, attach the tail of seat upholstery to Velcro strap under the rear of seat plate(2).
- Pull front part of upholstery forward and fix it to Velcro strap under the front of seat plate(3).



Caution

Property to diminish the contamination of upholstery may be lessened, depending on the frequency of use and washing.

